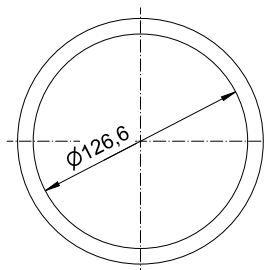
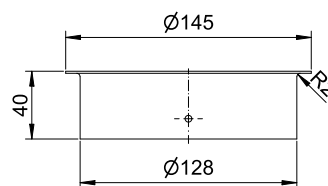


ART. DP-281

Circular waste chute

Circular waste chute, black, 40mm height, 145mm diameter

Circular waste chute for washbasin installation from above or below. Stainless steel, black powder-coated surface in RAL 9005 deep black with fine structure. 1.2mm thickness. With crimped edge. Including mounting clips and screws.



Montageklammern / Mounting Bracket

