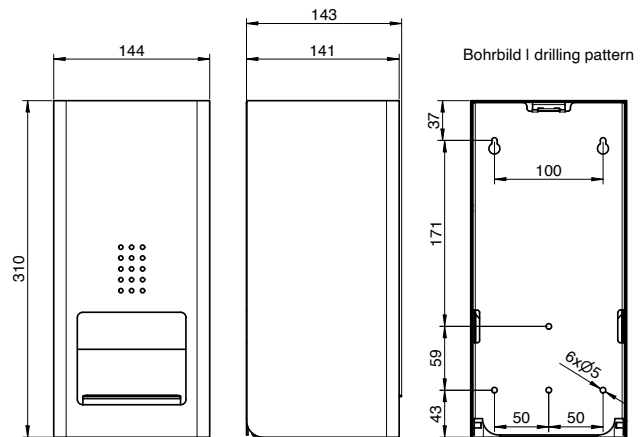
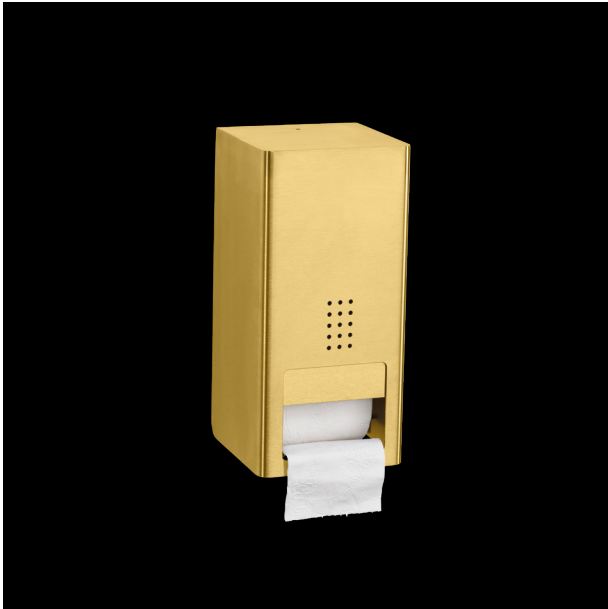


Double toilet roll holder ME-300



Double toilet roll holder manual, brass

Double toilet roll holder manual for wall mounting. Stainless steel with PVD coating in brass. Cover 1.5mm thickness. Perforated design area with 4mm drillings. Lock not visible. For two rolls with max. 140mm width and 130mm diameter. Second roll drops into position when flap is moved upwards. Works without spindle system. Including key, stainless steel screws and plugs.